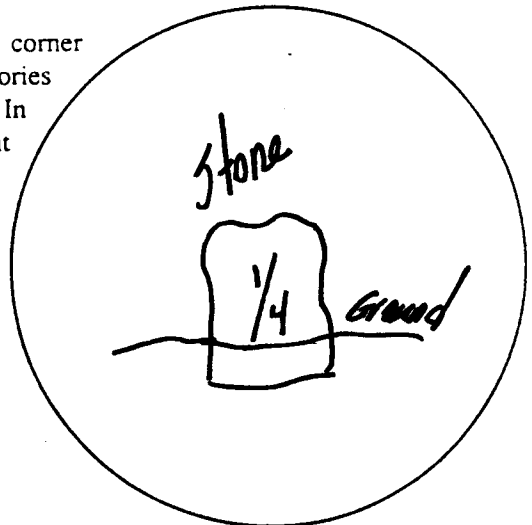


Wyoming Certified Land Corner Recordation Certificate

This form is to be completed in accordance with W.S. 36-11-101, printed in black ink or typed, and shall be for one individual corner.

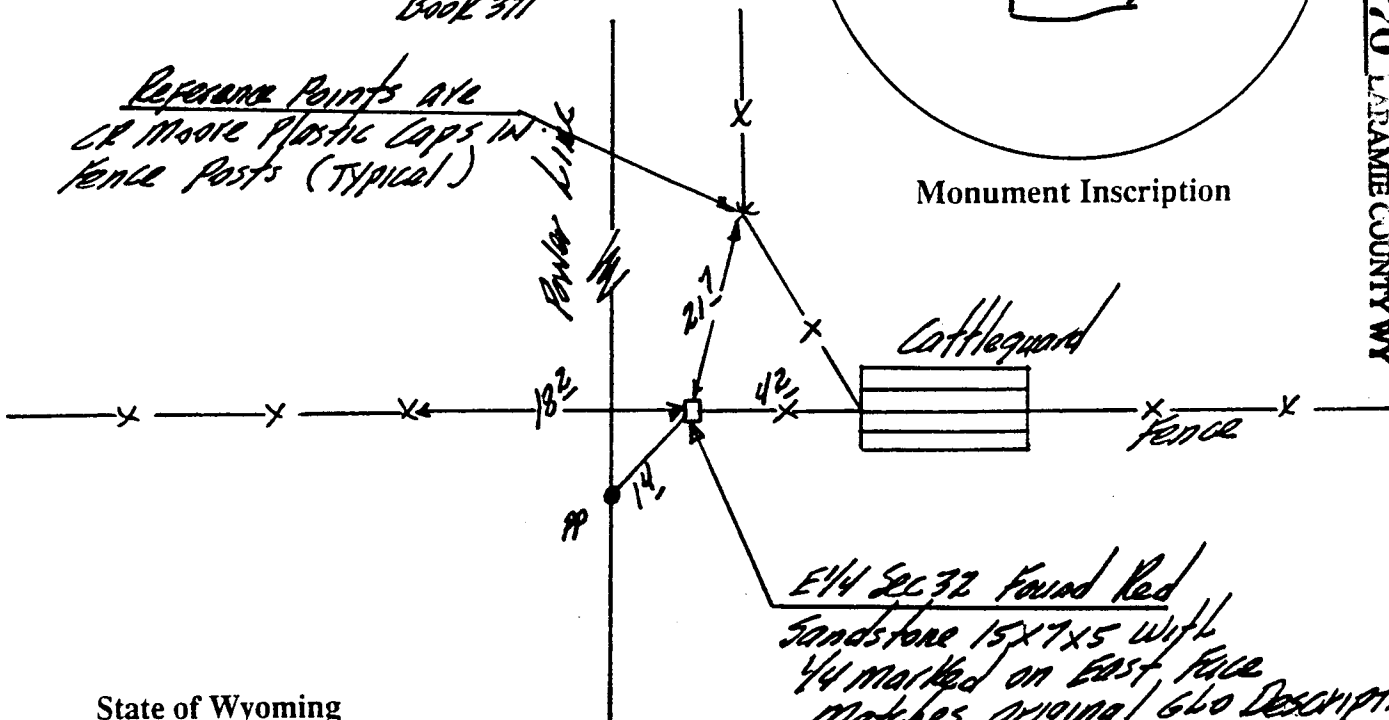
Describe below, or show in sketch attached to this form, the corner evidence found. Include condition and type of monument, accessories and ties. Describe any maintenance or rehabilitation performed. In the circle to the right, show monument inscription. If monument is determined lost or obliterated, restate the GLO or BLM original field note record; describe or show the procedure used to reestablish the corner and all data as above for a found monument.



Monument Inscription

Field Date 3/25/93 Office Reference 3/30/93
Book 311

*Reference Points are
 or more plastic caps in
 fence posts (typical)*



State of Wyoming
 Office of County Clerk
 County of _____

This Certified Land Corner Recordation Certificate was filed for record on the _____ day of _____, 19 ____, in Book No. T _____, R _____, on Alpha-Numeric coordinates _____ and was noted on the Cross Index Plat.

County Clerk

Corner Type:
 Aliquot Corner Other
 Corner Name 1/4 corner

Section(s) 32 Meridian 6th PM
 Township 15 North Range 63 West Page _____

Sheet 1 of 1

X9

RECORDING 8-11-93 AT 4:50 O'CLOCK P.M.
 REFERENCE NO. 124770 LARAMIE COUNTY WY